



July 28, 2025

Project Reference: Deer Park Emergent Pole Replacement

Emergency electric transmission project in your community.

Dear Neighbor,

Duke Energy is committed to providing our customers with safe and reliable energy. We continually evaluate our network of power lines that serves homes, schools and businesses to determine the best solutions to help meet the region's energy needs now and in the future. To help keep this commitment, we are making improvements to the power grid in your area.

We have found an emergency need to replace a 1970s-vintage wood transmission pole near the intersection of Blue Ash Road and Webster Avenue in Deer Park, Ohio. The location of the construction site is featured on the enclosed map. This structure supports a 138-kilovolt (kV) transmission line. Construction for this project is undergoing regulatory approval from the Ohio Power Siting Board (OPSB).

The present wood structure is 80 feet in height. It will be replaced with a 105-foot steel structure to accommodate a future road improvement project. The existing electric wires will be transferred to the new structure and will remain at the same height as the present wood structure. The new pole will be replaced within 10 to 15 feet of the present wood pole location. The steel structure will help to improve the reliability of the electric transmission line. Construction for the project is planned immediately upon approval by the Ohio Power Siting Board (OPSB) and is expected to be completed in August.

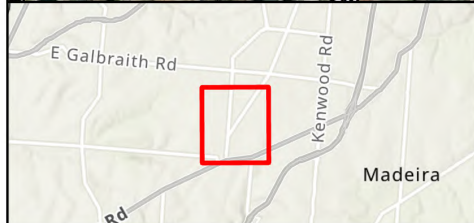
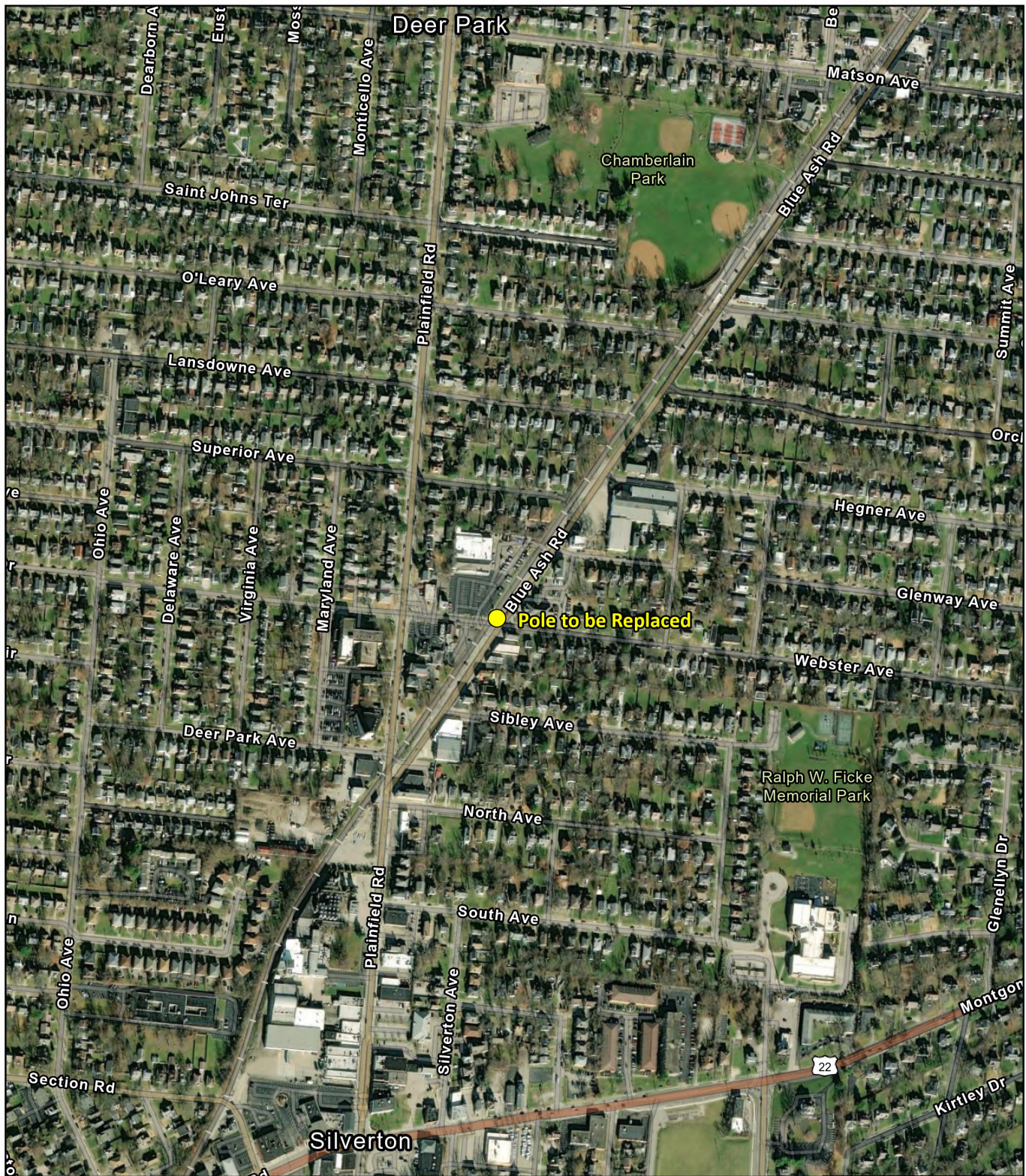
If you have questions about this project, feel free to reach out to us at **888.827.5116** or by email at **MWOHioTransmission@duke-energy.com**. Please include the project name (noted above), your name, property address and a phone number where we may reach you. The project website is at duke-energy.com/DPark.

Thank you in advance for your patience as we work to serve your current and future energy needs.

Sincerely,

Duke Energy Ohio

Enclosure



● Duke Energy Owned Pole to be Replaced



0 500 1,000
US Feet



Deer Park Emergent
Pole Replacement

DRAWN BY: Duke Energy
Date: 7/23/2025